



**WASH • DRY • STORE • PROTECT**



## **Hose Winder**

ITEM#:HW-1

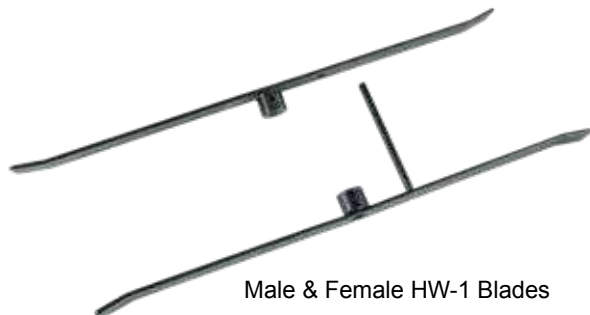
## **ASSEMBLY INSTRUCTIONS & PARTS LIST**

(800) 991-9120 • [SALES@GROVES.COM](mailto:SALES@GROVES.COM) • [WWW.READYRACK.COM](http://WWW.READYRACK.COM)

# PARTS



HW-1 Body



Male & Female HW-1 Blades



HW-1 Handle/Spindle Assembly

## ALL PARTS SHOWN BELOW:

- HW-1 Body
- HW-1 Handle/Spindle Assembly
- Male HW-1 Blade
- Female HW-1 Blade

## HARDWARE NEEDED:

- Philips Head Screw Driver
- Socket Wrench
- 11/16" and 3/4" Socket
- 11/16" and 3/4" Wrench
- Set of Hex Wrenches



## MOUNTING RECOMENDATIONS:

We recommend that the HW-1 be mounted to our Mobile Hose Carts (see last page) or optional trailer hitch mount (TM-2).

## VIDEO TUTORIALS:

Use the below links on the assembly instructions

HW-1 Assembly Video: <https://www.youtube.com/watch?v=JdYI1ffYZw4>

How to Operate the HW-1 Video: <https://www.youtube.com/watch?v=hojqUw7VXXM&t=34s>

## STEP 1

Start by having one person to take the body of HW-1 and hold it against the desired product that is compatible with it. The HW-1 is also compatible with any 2 1/2 inch square posts.



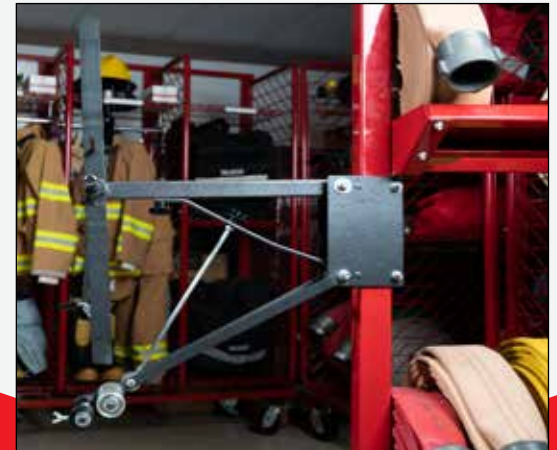
## STEP 2

Have the second person insert the bolts, washers, locking washers, then nuts to the side of HW-1 Mounting Bracket be sure everything is very tight and secure to the mounting bracket so it can withstand the weight of winding hoses.



## STEP 3

Adjust the body components into their respective positions and secure both knob fasteners.



## STEP 4

Take the Handle/Spindle Assembly and slide through the spindle hole of the upper arm of the HW-1 Body. Make sure the handle is on the opposite side of the hose threading rollers.



## STEP 5

Grab the male guide blade and slide it on to the other side of the now attached handle. When sliding it through the handle's rail, be sure the flat section lines up with the screws. Then tighten the screws with your hex wrench. Next grab the female guide blade and fit it onto the rail with the elevated hole going towards the body of the HW-1.



## STEP 6

You can now use your Philips head screwdriver to tighten the screw at the end of the handle. For further information on assembly and operation of the hose winder, please see video links on the parts page.







Please visit [readyrack.com/guides](http://readyrack.com/guides) to find more information and other assembly instruction guides.



*Shown: Hose winder attached to the Mobile Hose Cart (sold separate)*

To watch the assembly video, type this link into your browser: <https://www.youtube.com/watch?v=JdYI1ffYZw4>

**"WE TAKE CARE OF THE GEAR THAT TAKES CARE OF YOU"**

**GROVES INCORPORATED**  
818 TRAKK LN, WOODSTOCK, IL 60098  
800-991-2120 • [SALES@GROVES.COM](mailto:SALES@GROVES.COM)  
[WWW.READYRACK.COM](http://WWW.READYRACK.COM)

