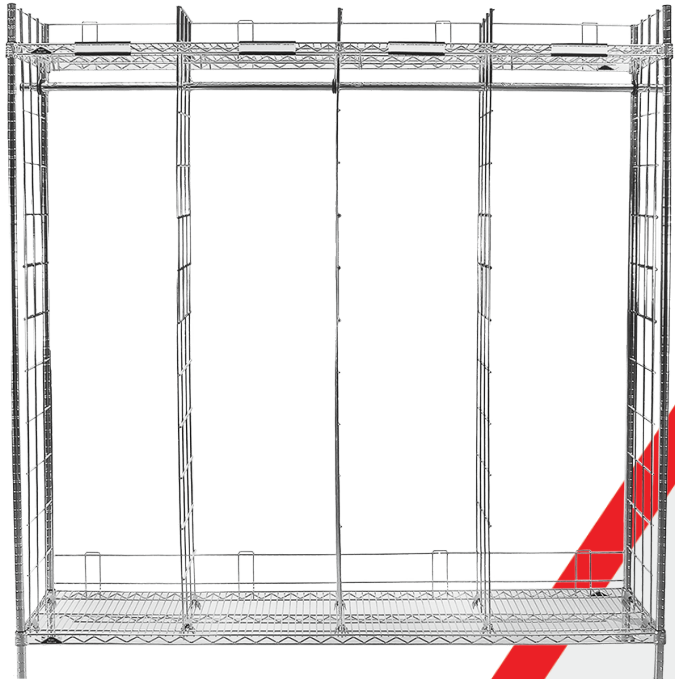




WASH • DRY • STORE • PROTECT

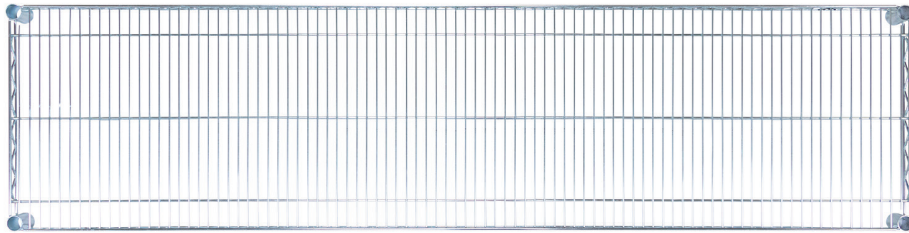


Freestanding Ready Rack

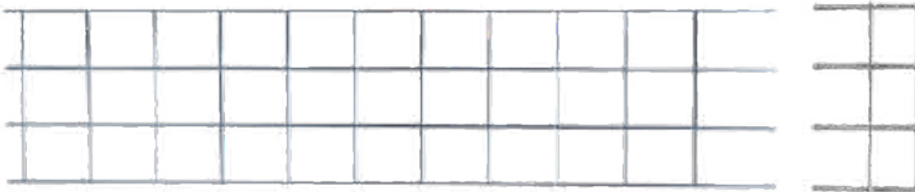
ITEM#:FSS

**ASSEMBLY INSTRUCTIONS
& PARTS LIST**

PARTS



Shelving



Divider panel

Divider panel top



Hanging pole



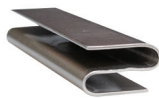
Posts



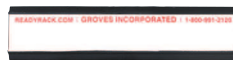
Back ledge



Split sleeves



S-Hooks



Label holder



Hanging hook



Post connectors



Post feet



Self grippers



Bunker pant hook

ALL PARTS SHOWN BELOW:

- Divider panel
- Divider panel top
- Shelving
- Posts
- Shelf grippers
- Split sleeves
- Back ledge
- S-Hooks (not included with every locker system) (depending on locker run)
- Hanging pole
- Label holder
- Hanging hook
- Post feet
- Pole connector (not included with every locker system)

HARDWARE NEEDED:

- Rubber mallet
- Hammer

ASSEMBLY TIME:

The approximate assembly time for the FSS will average about 25 - 35 minutes per compartment.

VIDEO TUTORIAL:

- URL: www.youtube.com/user/readyrack
- Click "Videos" tab to find the video: "Freestanding Ready Rack - Assembly Guide" or copy and paste this link into your browser:

<https://youtu.be/AGHXrietA>

STEP 1

Start by securing the feet to the bottom of the posts. These will help balance the rack in a variety of situations



STEP 2

Next you will need to attach your split sleeves to the bottom of the posts with the lines matching up. Make sure the split sleeve is in the same position on all four posts.



STEP 3

You can now run your post through the holes on the bottom shelf. Move the longer end of the posts through the shelf first for the split sleeves to function properly.



STEP 4

Once finished, you can stand up your rack and make sure the shelf is secure against the four posts by tapping the shelf with a rubber mallet.



STEP 5

Measure 64 inches from the top of the bottom shelf to the top of the next split sleeve. This will ensure that your top shelf is level and at the proper height for the divider panels. Once you finish, you can place the top shelf on your rack. Tap the shelf with a rubber mallet to ensure it is secure.



STEP 5.2

For extended locker runs you will attach any “Add On Units” to the starter unit you just built. Take your next two equally sized shelves and follow steps 1 through 5, but only use two posts. Put the two post on one end of the shelving. When attaching the shelves to the posts make sure they are level to the posts in the same manner as the starter unit and at the same height.



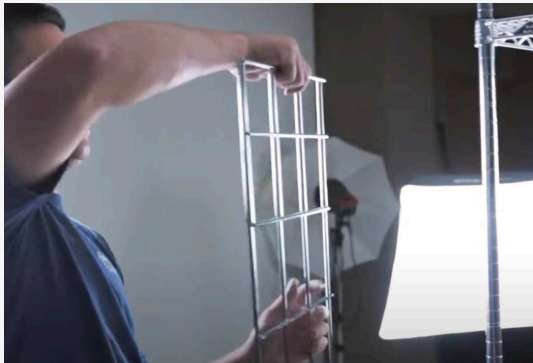
STEP 5.3

Now attach two S-Hooks to the end of the top and bottom shelves of the starter unit. Once the S-Hooks are in place, stand up your “Add On Unit” and lower the shelving ends with no posts onto the S-Hooks. Repeat this process until all “Add On Units” are attached.



STEP 6

You are now ready to install your divider panel. Remove the top portion of your divider panel. *The space between these will match with the model purchased. *If you purchased an 18-inch model they will be 18 inches apart, just as if you got a 24 inch model they'll be 24*



STEP 7

Once you're sure your divider panel is straight, you can now put the top on, securing it to the rack.



STEP 8

Add two shelf grippers to the top and bottom, as shown. This will secure your divider panel to the shelf. Repeat this step for the rest of your divider panel.



STEP 9

Take your hanging pole and slide it through the top middle section of the divider panel just below the top shelf. Slide your hanging hooks on to the hanging pole and space them out evenly. Now connect the hanging hooks to the top shelf.

When using multiple hanging poles, use the pole connector to bring them together and make one continuous hanging pole. Take one nut of the pole connector and hammer it into one end of the pole. Take the other nut and hammer it into the end of the adjoining pole. Insert the threaded bolt into both nuts and twist to bring together.



STEP 10

Attach the 4 inch back ledges to both shelf levels by sliding the wire bottoms over the quarter inch truss wire.



STEP 11

The last step is putting on the label holders and bunker pant hooks





Please visit [readyrack.com/guides](https://www.readyrack.com/guides) to find more information and other assembly instruction guides.

To watch the Freestanding Ready Rack video, copy and paste this link into your browser: <https://youtu.be/AGHXxrietA>

"WE TAKE CARE OF THE GEAR THAT TAKES CARE OF YOU"

GROVES INCORPORATED
818 TRAKK LN, WOODSTOCK, IL 60098
800-991-2120 • SALES@GROVES.COM
WWW.READYRACK.COM

